

Abstatt  
30.01.2017

Von  
BEG/MSD4

Bearbeiter  
René Schick

Telefon  
+49(7062)911-9363

## Documentation

Ausgabe

Thema **How to import RaceCon export files for CAS-M light**

Beschreibung

## Inhaltsverzeichnis

1	Background .....	2
2	Step by step import.....	2
3	Additional information .....	10

Abstatt  
30.01.2017Von  
BEG/MSD4Bearbeiter  
René SchickTelefon  
+49(7062)911-9363

Ausgabe

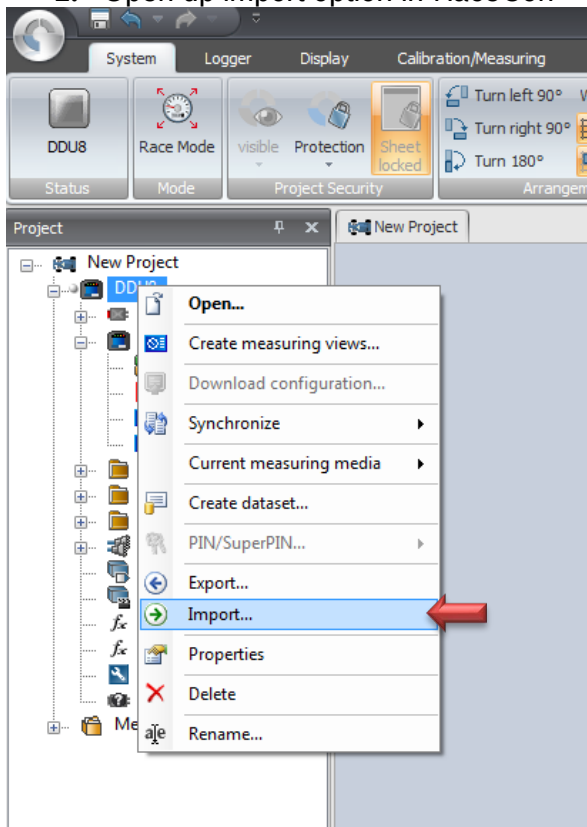
Thema How to import RaceCon export files for CAS-M light

## 1 Background

This brief instruction explains how to import a provided RaceCon export file (.rex) for CAS-M light from Bosch Motorsport into an existing RaceCon project from the customer. The export file includes pre-defined CAN messages, conditional channels and display elements for a DDU7, DDU8 and DDU9.

## 2 Step by step import

### 1. Open up import option in RaceCon



Open your RaceCon project and select import option. Select the DDU device in your RaceCon project by clicking on the right mouse button and select "Import".

Abstatt  
30.01.2017

Von  
BEG/MSD4

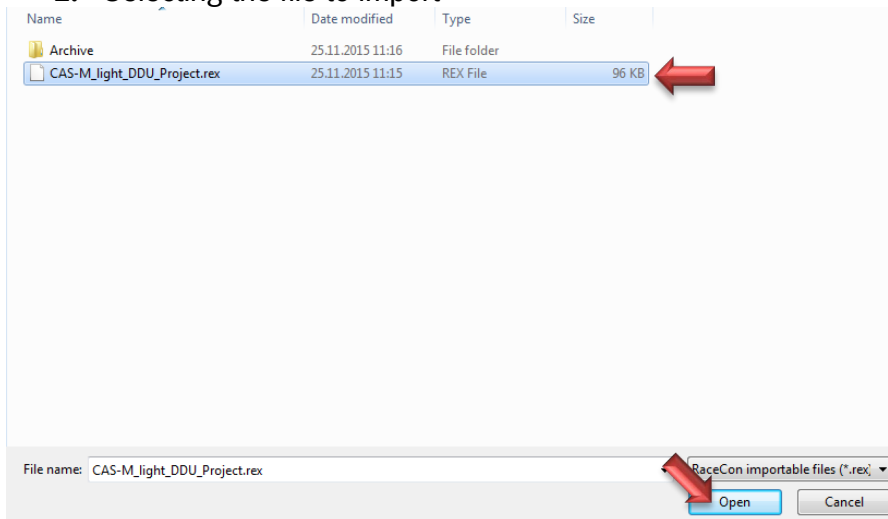
Bearbeiter  
René Schick

Telefon  
+49(7062)911-9363

Ausgabe

Thema           How to import RaceCon export files for CAS-M light

## 2. Selecting the file to import



Search for the provided export file with the explorer window which opens up. After selecting the provided export file (.rex file) with the explorer window click on the “open” button.

Abstatt  
30.01.2017

Von  
BEG/MSD4

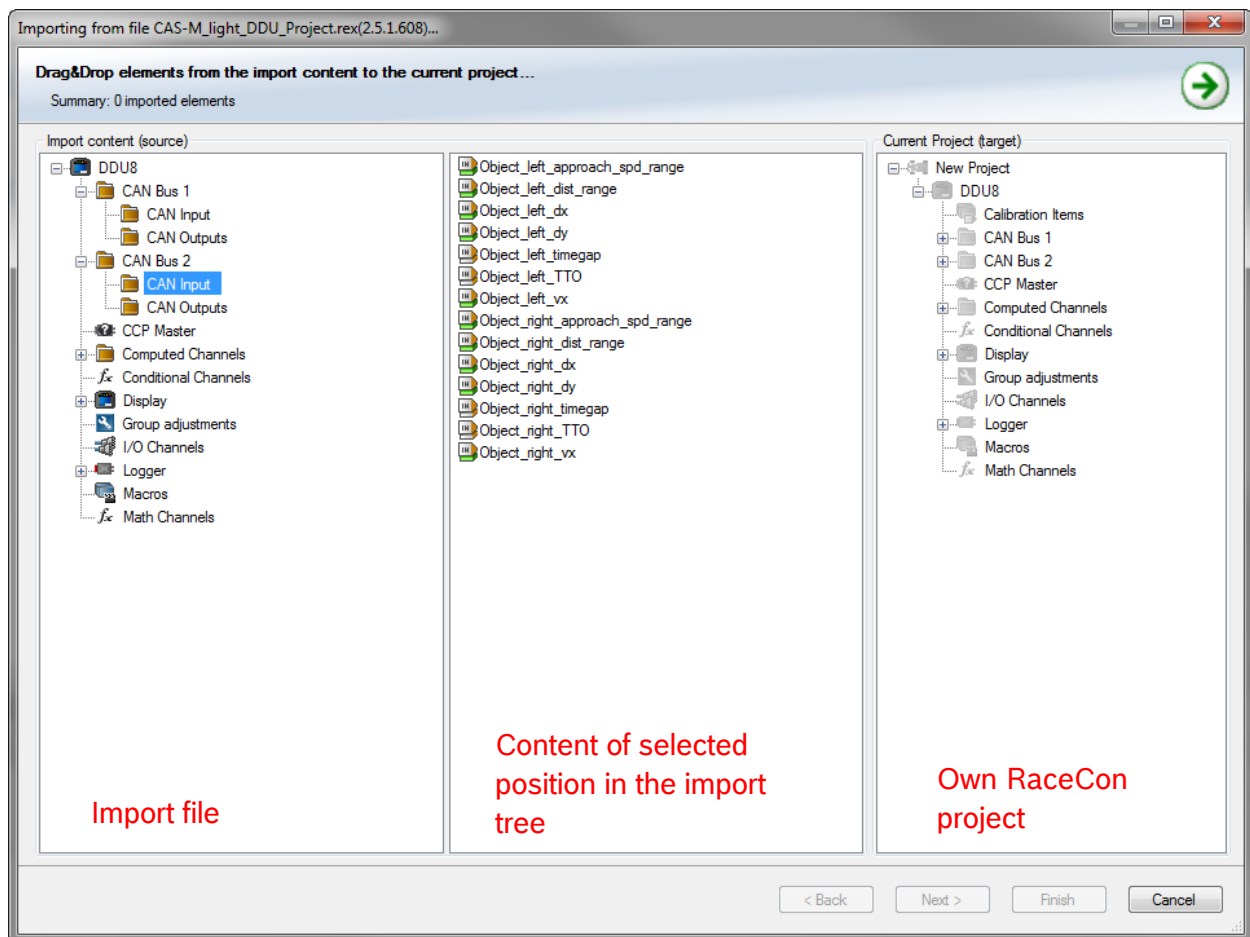
Bearbeiter  
René Schick

Telefon  
+49(7062)911-9363

Ausgabe

Thema           How to import RaceCon export files for CAS-M light

### 3. Using the RaceCon import manager



The import manager opens up. This window allows you to import data from the source file to a specific location in your own RaceCon project.

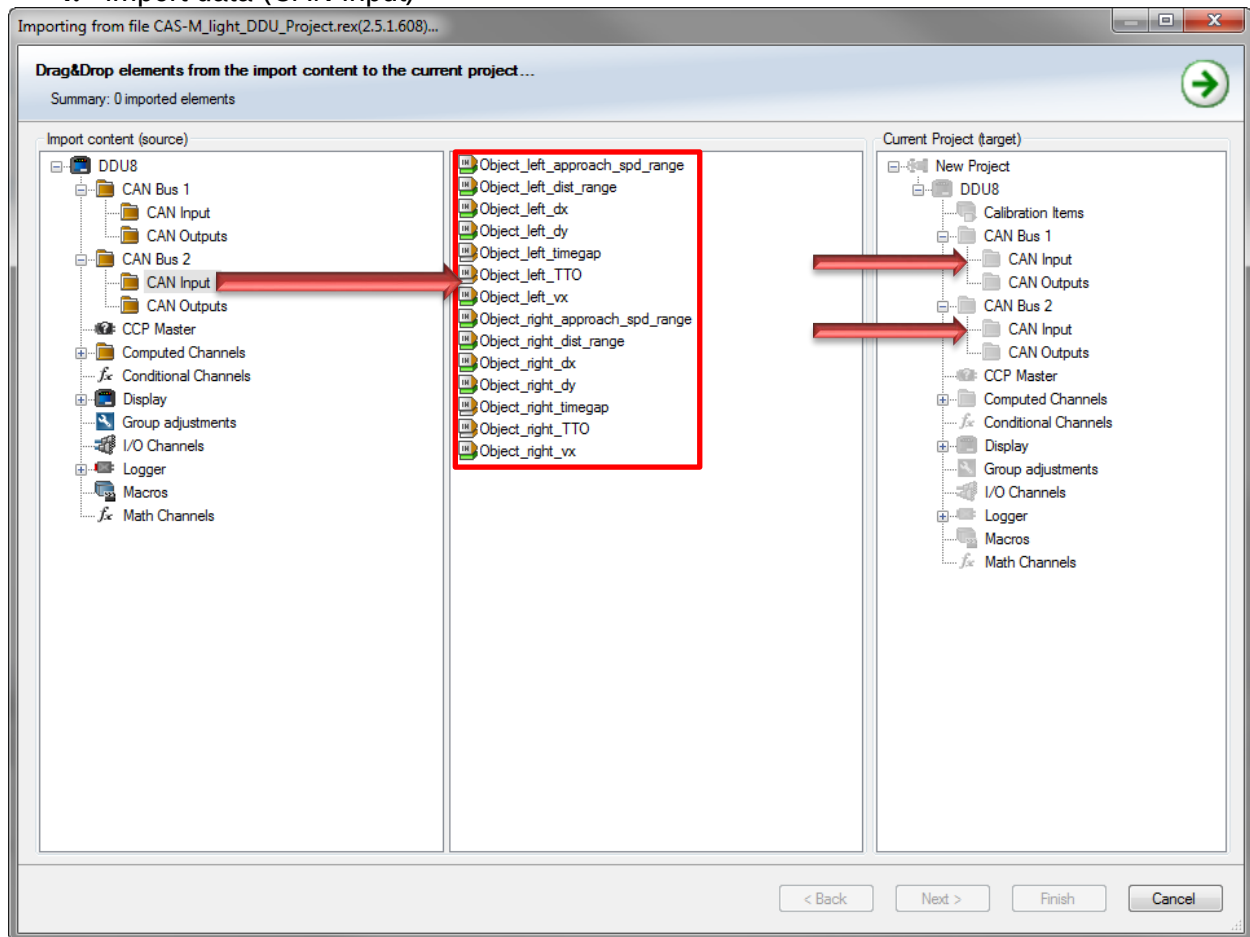
To import the provided CAS-M light data to your existing project, just use drag and drop to copy the data.

The imported data should be placed in the same tree folder of your project as in the provided import file. For example the “CAN Input” signals from the import file have to be placed in the “CAN Import” folder of your RaceCon project.

Ausgabe

Thema           How to import RaceCon export files for CAS-M light

#### 4. Import data (CAN Input)



The CAN messages from the sensor to the DDU can be placed on CAN Bus 1 Input or CAN Bus 2 Input depending on the used CAN Bus in your application.

Von  
BEG/MSD4

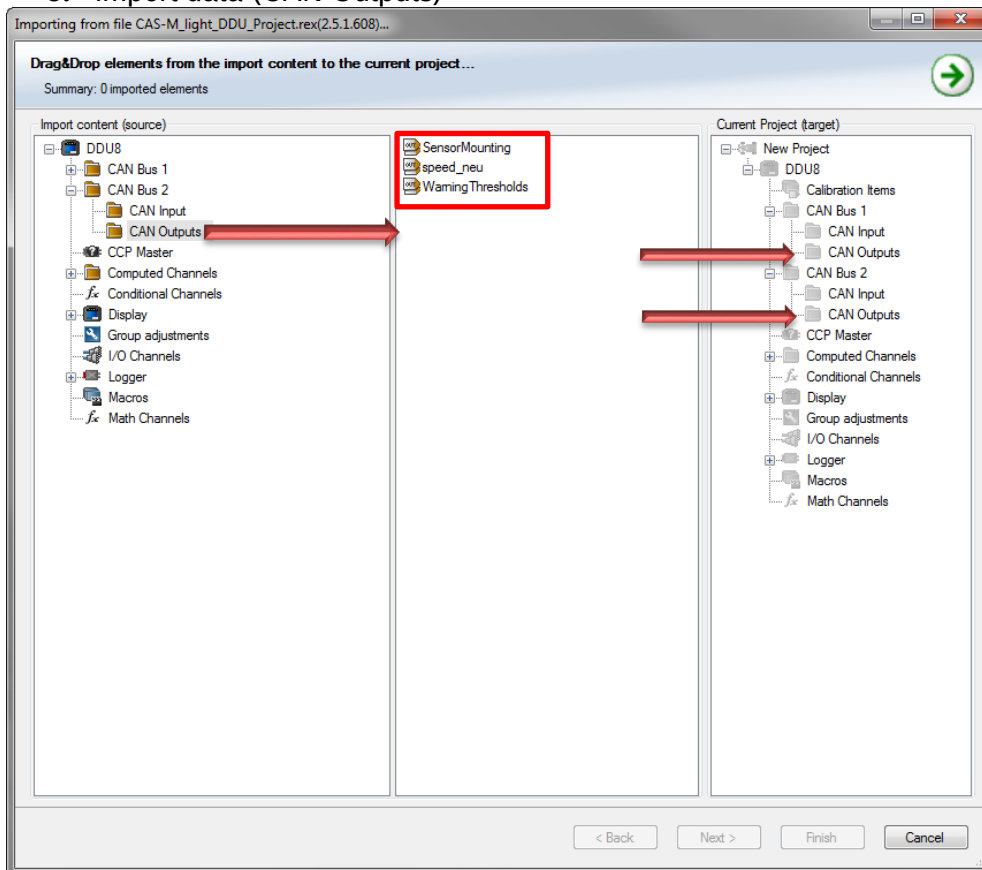
Bearbeiter  
René Schick

Telefon  
+49(7062)911-9363

Ausgabe

Thema           How to import RaceCon export files for CAS-M light

### 5. Import data (CAN Outputs)



The CAN messages from the DDU to the sensor can be placed on CAN Bus 1 Outputs or CAN Bus 2 Outputs depending on the used CAN Bus in your application.

Von  
BEG/MSD4

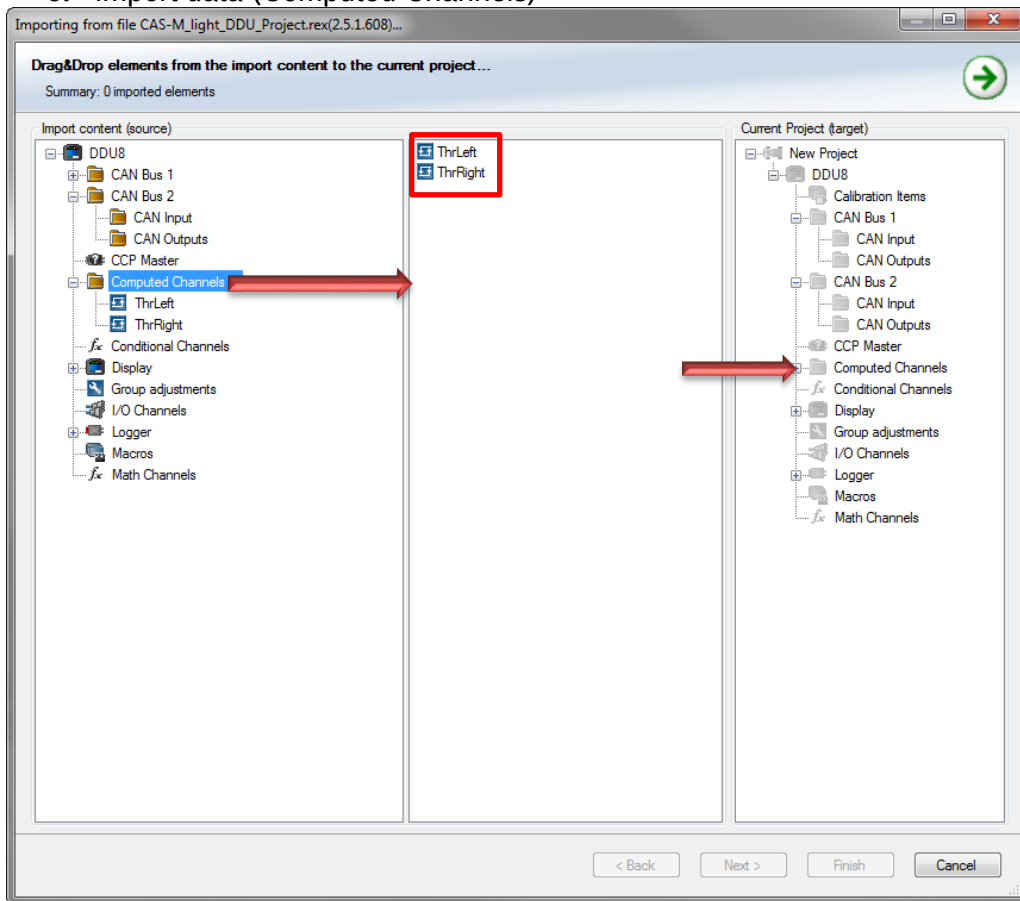
Bearbeiter  
René Schick

Telefon  
+49(7062)911-9363

Ausgabe

Thema           How to import RaceCon export files for CAS-M light

### 6. Import data (Computed Channels)



The computed channels in the DDU are for raw signal filtering.

Von  
BEG/MSD4

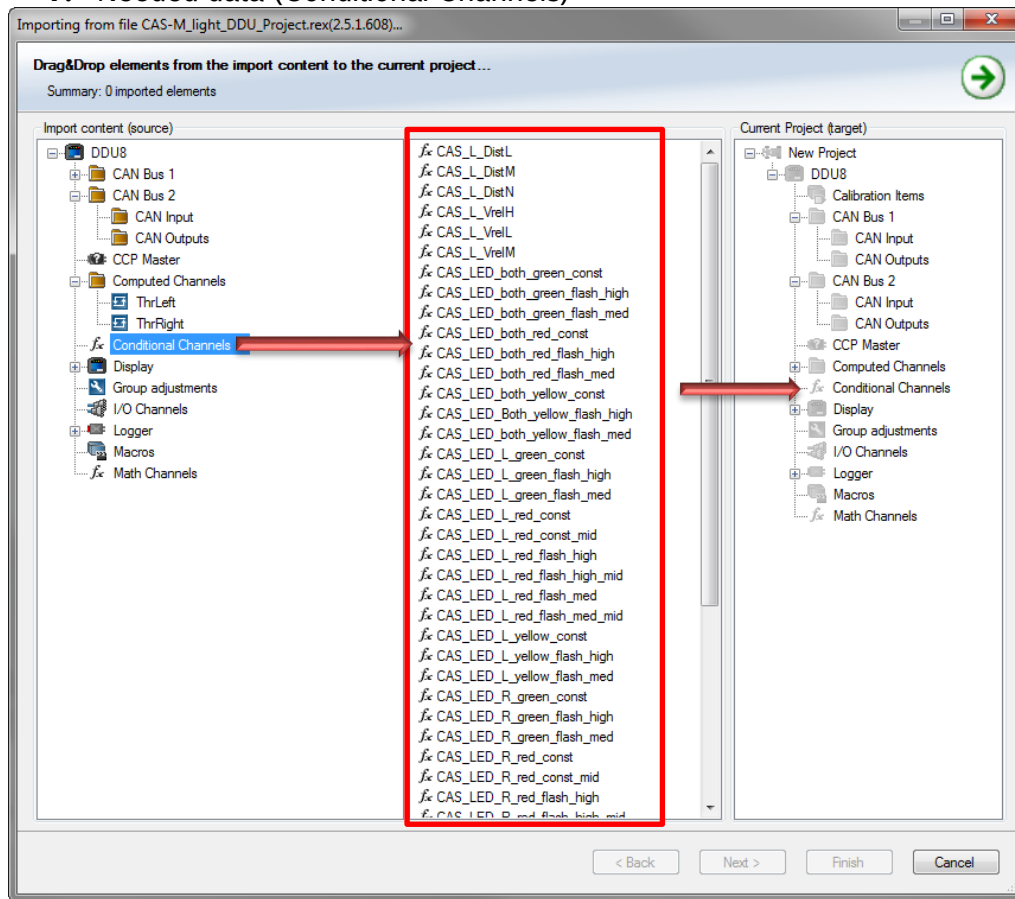
Bearbeiter  
René Schick

Telefon  
+49(7062)911-9363

Ausgabe

Thema           How to import RaceCon export files for CAS-M light

### 7. Needed data (Conditional Channels)



Conditional channels in the DDU for logic data.



Von  
BEG/MSD4

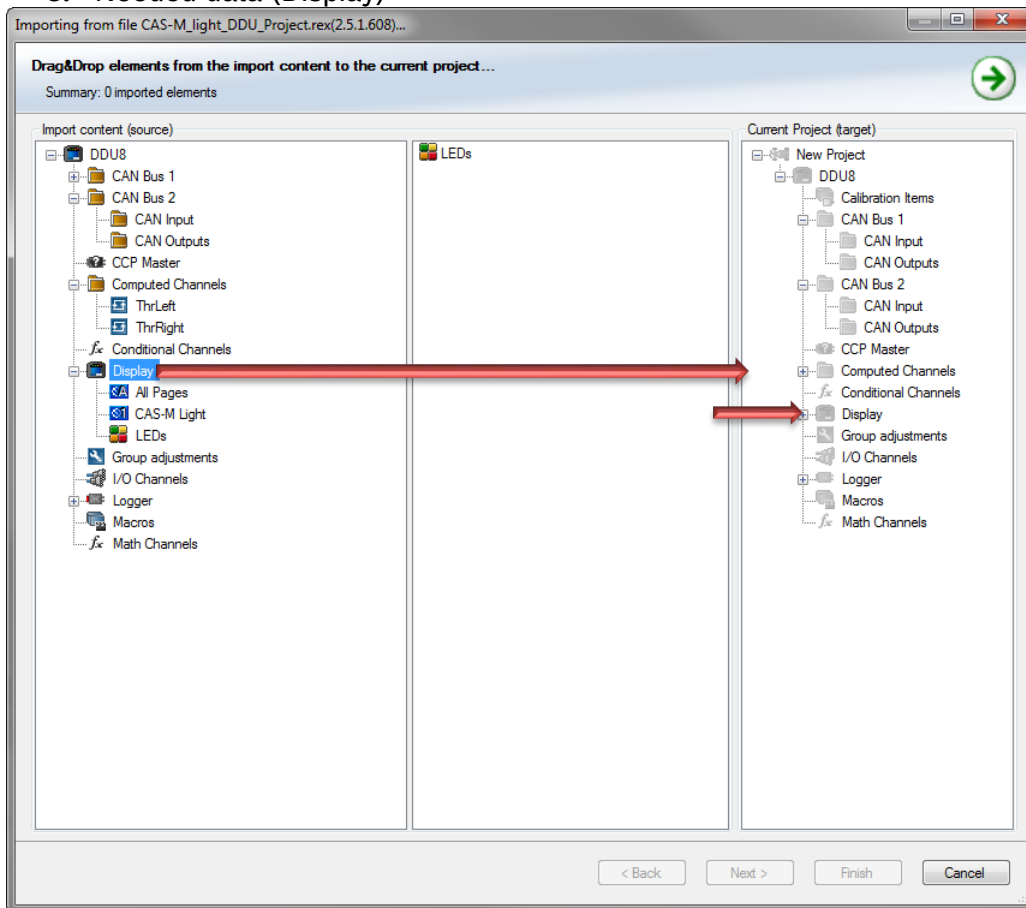
Bearbeiter  
René Schick

Telefon  
+49(7062)911-9363

Ausgabe

Thema           How to import RaceCon export files for CAS-M light

### 8. Needed data (Display)



Display elements for warning LED's, warning arrows on display and raw sensor data page. The sensor raw data page is may not needed.

Von  
BEG/MSD4

Bearbeiter  
René Schick

Telefon  
+49(7062)911-9363

Abstatt  
30.01.2017

Ausgabe

Thema      How to import RaceCon export files for CAS-M light

### **3 Additional information**

The provided export file should ease the implementation of the CAS-M light system.  
All display elements can be adjusted to your own needs.

Please adapt the content of the configuration CAN frames from the DDU to the sensor to the parameters used in your application (0x618, 0x620).

Please also add an input signal for the predefined CAN output speed signal (0x616).

Please see our datasheet and user manual for further information:

[http://www.bosch-motorsport.de/de/de/produkte/catalog\\_products\\_1\\_405022.php](http://www.bosch-motorsport.de/de/de/produkte/catalog_products_1_405022.php)

---

BEG/MSD4